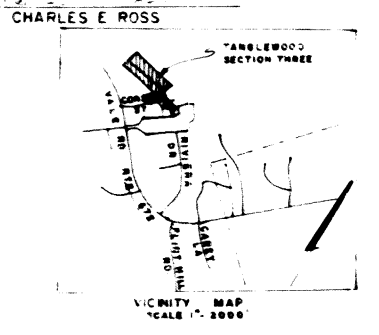
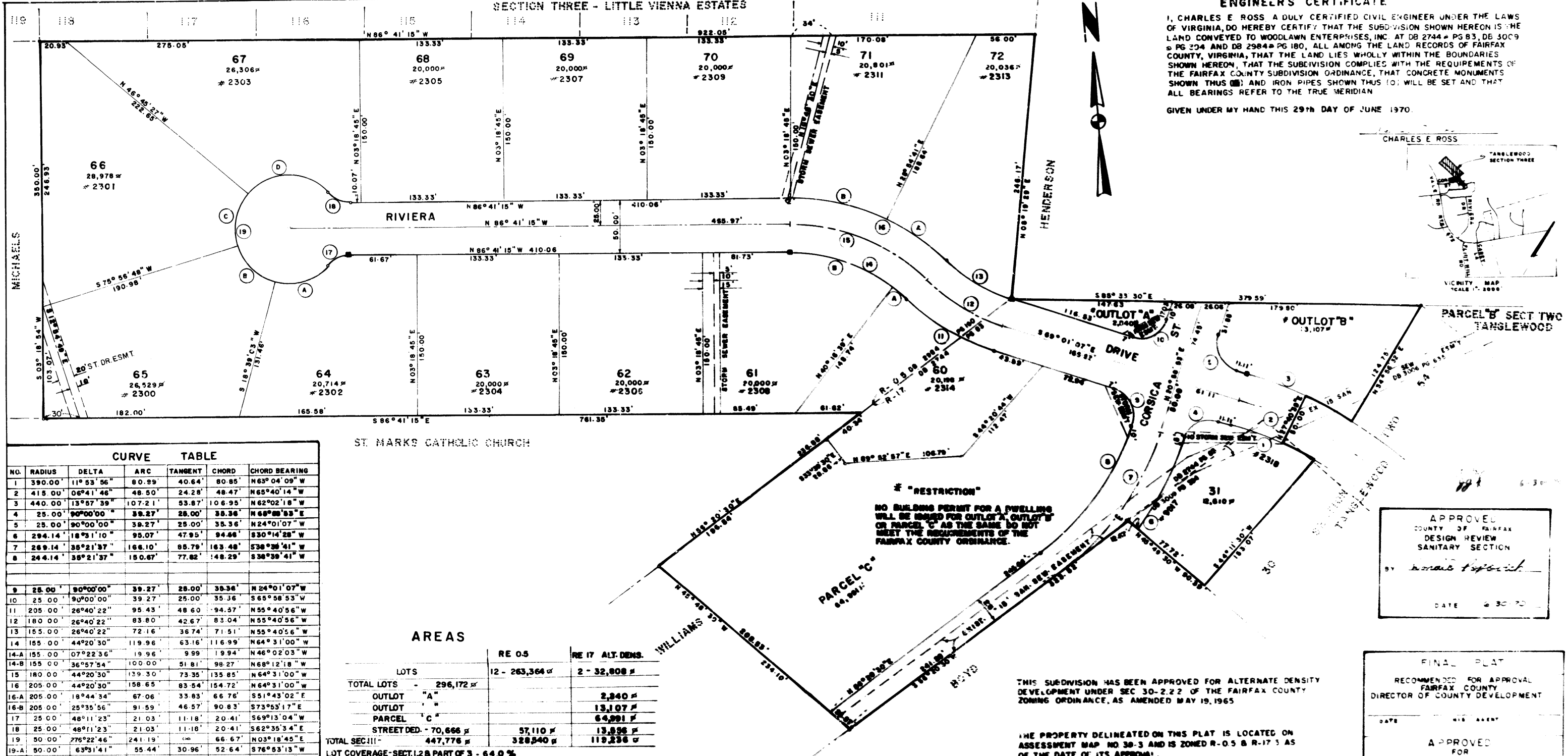


SECTION THREE - LITTLE VIENNA ESTATES

ENGINEER'S CERTIFICATE

I, CHARLES E ROSS A DULY CERTIFIED CIVIL ENGINEER UNDER THE LAWS OF VIRGINIA, DO HEREBY CERTIFY THAT THE SUBDIVISION SHOWN HEREON IS THE LAND CONVEYED TO WOODLAWN ENTERPRISES, INC. AT DB 2744 # PG 83, DB 3009 # PG 204 AND DB 2984 # PG 180, ALL AMONG THE LAND RECORDS OF FAIRFAX COUNTY, VIRGINIA, THAT THE LAND LIES WHOLLY WITHIN THE BOUNDARIES SHOWN HEREON, THAT THE SUBDIVISION COMPLIES WITH THE REQUIREMENTS OF THE FAIRFAX COUNTY SUBDIVISION ORDINANCE, THAT CONCRETE MONUMENTS SHOWN THUS (■) AND IRON PIPES SHOWN THUS (○) WILL BE SET AND THAT ALL BEARINGS REFER TO THE TRUE MERIDIAN

GIVEN UNDER MY HAND THIS 29th DAY OF JUNE 1970.



**CURVE TABLE**

NO.	RADIUS	DELTA	ARC	TANGENT	CHORD	CHORD BEARING
1	390.00'	11° 53' 56"	80.99'	40.64'	80.85'	N63° 04' 09" W
2	415.00'	06° 41' 46"	48.50'	24.28'	48.47'	N65° 40' 14" W
3	440.00'	13° 57' 39"	107.21'	53.87'	106.95'	N62° 02' 18" W
4	25.00'	90° 00' 00"	39.27'	25.00'	35.36'	N24° 01' 07" W
5	25.00'	90° 00' 00"	39.27'	25.00'	35.36'	N24° 01' 07" W
6	294.14'	18° 31' 10"	95.07'	47.95'	94.86'	S30° 14' 28" W
7	269.14'	35° 21' 37"	166.10'	88.79'	163.48'	S38° 39' 41" W
8	244.14'	35° 21' 37"	150.67'	77.82'	148.29'	S38° 39' 41" W
9	25.00'	90° 00' 00"	39.27'	25.00'	35.36'	N24° 01' 07" W
10	25.00'	90° 00' 00"	39.27'	25.00'	35.36'	S65° 58' 53" W
11	205.00'	26° 40' 22"	95.43'	48.60'	94.57'	N55° 40' 56" W
12	180.00'	26° 40' 22"	83.80'	42.67'	83.04'	N55° 40' 56" W
13	155.00'	26° 40' 22"	72.16'	36.74'	71.51'	N55° 40' 56" W
14	155.00'	44° 20' 30"	119.96'	63.16'	116.99'	N64° 31' 00" W
14-A	155.00'	07° 22' 36"	19.96'	9.99'	19.94'	N46° 02' 03" W
14-B	155.00'	36° 57' 54"	100.00'	51.81'	98.27'	N68° 12' 18" W
15	180.00'	44° 20' 30"	139.30'	73.35'	135.85'	N64° 31' 00" W
16	205.00'	44° 20' 30"	158.65'	83.54'	154.72'	N64° 31' 00" W
16-A	205.00'	18° 44' 34"	67.06'	33.83'	66.76'	S51° 43' 02" E
16-B	205.00'	25° 35' 56"	91.59'	46.57'	90.83'	S73° 53' 17" E
17	25.00'	48° 11' 23"	21.03'	11.18'	20.41'	S69° 13' 04" W
18	25.00'	48° 11' 23"	21.03'	11.18'	20.41'	S62° 35' 34" E
19	50.00'	27° 22' 46"	24.19'	12.09'	24.19'	N03° 18' 45" E
19-A	50.00'	63° 31' 41"	55.44'	30.96'	52.64'	S76° 53' 13" W
19-B	50.00'	57° 17' 45"	50.00'	27.32'	47.94'	N42° 42' 05" W
19-C	50.00'	57° 17' 45"	50.00'	27.32'	47.94'	N14° 38' 40" E
19-D	50.00'	98° 15' 35"	85.75'	57.78'	75.62'	S87° 37' 40" E

ST. MARKS CATHOLIC CHURCH

**AREAS**

	RE 05	RE 17 ALT. DENS.
LOTS	12 - 263,364 #	2 - 32,808 #
TOTAL LOTS	296,172 #	
OUTLOT "A"		2,840 #
OUTLOT "B"		13,107 #
PARCEL "C"		64,891 #
STREET DED.	70,666 #	57,110 #
TOTAL SEC III -	447,776 #	328,940 #
LOT COVERAGE - SECT. 1, 2 & PART OF 3 -	64.0 %	
LOTS PER AC. 2.10		
AVERAGE LOT AREA	21,947 #	

**RECORD PLAT**  
SECTION THREE  
**TANGLEWOOD**  
CENTREVILLE DISTRICT  
FAIRFAX COUNTY, VIRGINIA  
SCALE 1" = 80' JUNE 29, 1970  
**ROSS & FRANCE**  
CIVIL ENGINEERING & LAND SURVEYING  
MANASSAS - VIRGINIA, VIRGINIA

THIS SUBDIVISION HAS BEEN APPROVED FOR ALTERNATE DENSITY DEVELOPMENT UNDER SEC 30-2.22 OF THE FAIRFAX COUNTY ZONING ORDINANCE, AS AMENDED MAY 19, 1965

THE PROPERTY DELINEATED ON THIS PLAT IS LOCATED ON ASSESSMENT MAP NO 38-3 AND IS ZONED R-05 & R-17.5 AS OF THE DATE OF ITS APPROVAL.

DEPARTMENT OF COUNTY DEVELOPMENT  
DIVISION OF STREET DESIGN & REVIEW  
FAIRFAX COUNTY, VIRGINIA

ALL STREET LOCATIONS AND/OR EASEMENTS CONFORM TO THE REQUIREMENTS OF THIS OFFICE AND THE NECESSARY AGREEMENTS OR ORDOS HAVE BEEN RECEIVED

BY \_\_\_\_\_ DATE \_\_\_\_\_

APPROVED  
COUNTY OF FAIRFAX  
DESIGN REVIEW  
SANITARY SECTION  
BY *Charles E. Ross*  
DATE 6 30 70

FINAL PLAT  
RECOMMENDED FOR APPROVAL  
FAIRFAX COUNTY  
DIRECTOR OF COUNTY DEVELOPMENT  
DATE \_\_\_\_\_ HIS AGENT  
APPROVED  
FOR  
BOARD OF SUPERVISORS  
FAIRFAX COUNTY, VIRGINIA  
DATE \_\_\_\_\_ COUNTY EXECUTIVE  
APPROVAL VOID IF PLAT IS NOT OFFERED FOR RECORD WITHIN 90 DAYS AFTER DATE THEREOF

