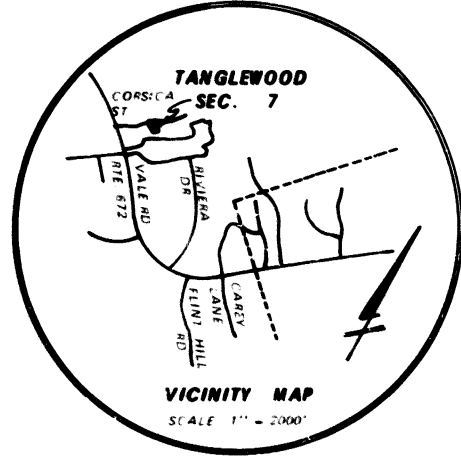
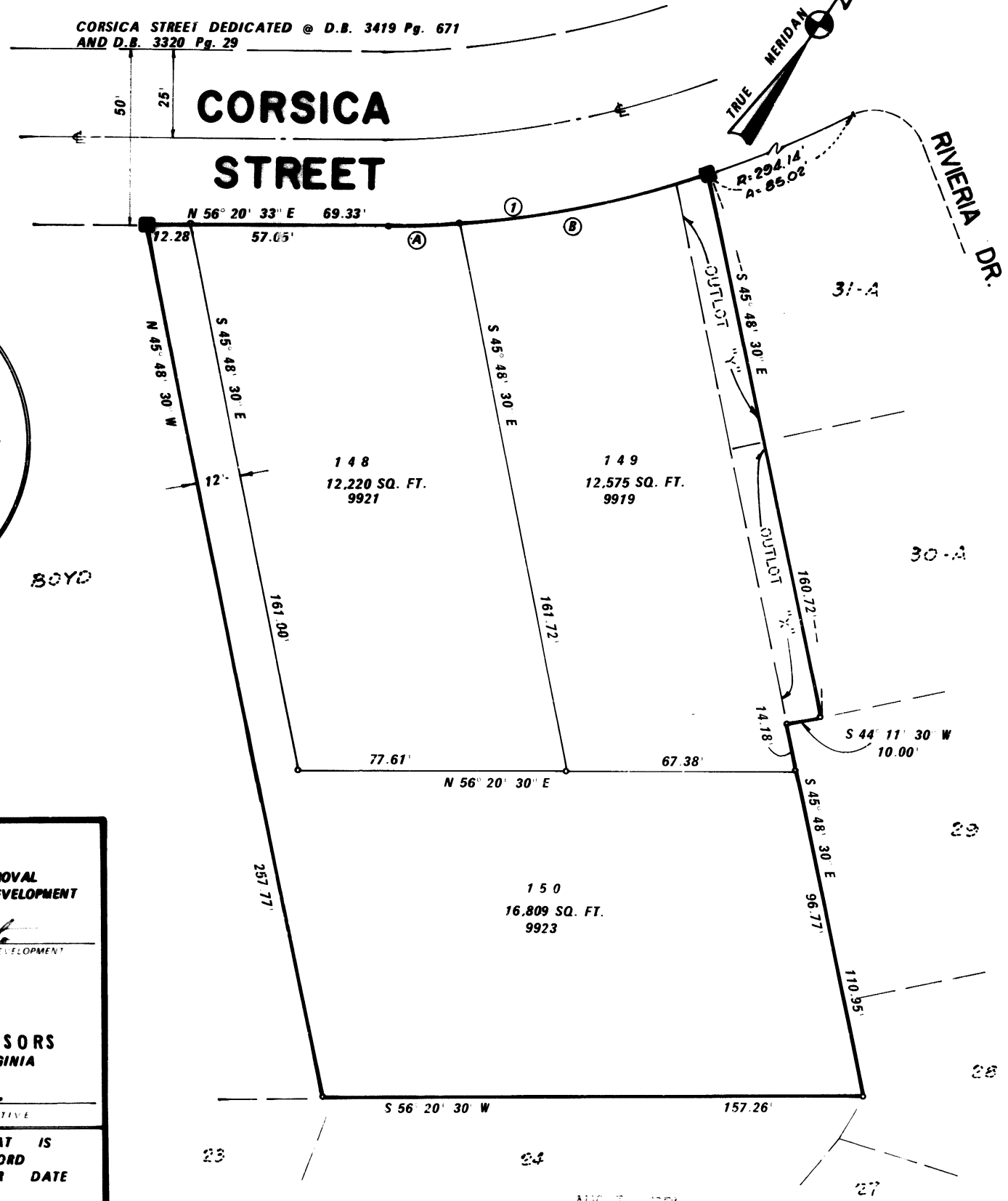


CURVE TABLE						
No.	Radius	Delta	Arc	Tangent	Chord	Chord Bearing
1	294.14'	18° 47' 55"	96.51'	48.69'	96.07'	N 46° 56' 32" E
1A	294.14	3 58 37	20.42	10.21	20.41	N 54 21 12 E
1B	294.14	14 49 18	76.99	38.26	75.88	N 44 57 14 E



APPROVED
COUNTY OF FAIRFAX
DIVISION OF DESIGN REVIEW
DESIGN REVIEW BOARD SECTION
BY *Melvin R. Hankister*
DATE 7-29-71

FINAL PLAT
RECOMMENDED FOR APPROVAL
FAIRFAX COUNTY DIRECTOR OF CO. DEVELOPMENT
[Signature]
DATE FOR DIRECTOR OF COUNTY DEVELOPMENT
APPROVED FOR BOARD OF SUPERVISORS FAIRFAX COUNTY, VIRGINIA
[Signature]
DATE *7/29/71* COUNTY EXECUTIVE
APPROVAL VOID IF PLAT IS NOT OFFERED FOR RECORD WITHIN 90 DAYS AFTER DATE THEREOF.

ENGINEERS CERTIFICATE
I, JOE H. FRANCE, a duly Certified Civil Engineer under the laws of Virginia, do hereby certify that the Subdivision shown hereon is the land conveyed to WOODLAWN ENTERPRISES, INC. at D.B. 3373 - Pg. 389, all among the land records of Fairfax County, Virginia, that the land lies wholly within the boundaries shown hereon, that the Subdivision complies with the requirements of the Fairfax County Subdivision Ordinance, that concrete monuments shown thus ■ and iron pipes shown thus ○ will be set, and that all bearings refer to the true meridian.
GIVEN UNDER MY HAND THIS 7 DAY OF JULY 1971
[Signature]
JOE H. FRANCE

THIS SUBDIVISION HAS BEEN APPROVED FOR ALTERNATE DENSITY DEVELOPMENT UNDER SEC. 30-2.2.2. OF THE FAIRFAX COUNTY ZONING ORDINANCE, AS AMENDED MAY 19, 1965.
THE PROPERTY DELINEATED ON THIS PLAT IS LOCATED ON ASSESSMENT MAP NO. 38-3 AND IS ZONED R-17 AS OF THE DATE OF ITS APPROVAL.

DEPARTMENT OF COUNTY DEVELOPMENT
DIVISION OF DESIGN REVIEW
FAIRFAX, VIRGINIA
ALL STREET LOCATIONS AND OR EASEMENTS CONFORM TO THE REQUIREMENTS OF THIS OFFICE AND THE NECESSARY AGREEMENTS OR BONDS HAVE BEEN RECEIVED.

BY *[Signature]* DATE *[Signature]*

AREA OF SUBDIVISION

LOT AREA (3)	44,604 SQ. FT.
TOTAL AREA SECTION 7	44,604 SQ. FT.
TOTAL AREA TANGLEWOOD	
SECTIONS 1,2,3,4,5,7	
LOTS (79)	1,080,542 SQ. FT.
TOTAL AREA	1,562,420 SQ. FT.
LOTS PER ACRE	2.2
PERCENT LOT COVERAGE	69%

RECORD PLAT
SECTION SEVEN
TANGLEWOOD
INCLUDING A RESUBDIVISION OF OUTLOTS "X" AND "Y", SECTION TWO & THREE
REC. D.B. 3422 PG. 520
CENTREVILLE DISTRICT
FAIRFAX COUNTY, VIRGINIA
SCALE 1" = 30' JULY 7, 1971
ROSS & FRANCE
CIVIL ENGINEERING & LAND SURVEYING
MANASSAS VIRGINIA

THIS DOCUMENT WAS MICROFILMED AUG 11 1971
COPIES OF MICROFILM MAY BE OBTAINED FROM
DIVISION OF ADMINISTRATIVE SERVICES
DEPARTMENT OF COUNTY DEVELOPMENT
COUNTY OF FAIRFAX, VA.